

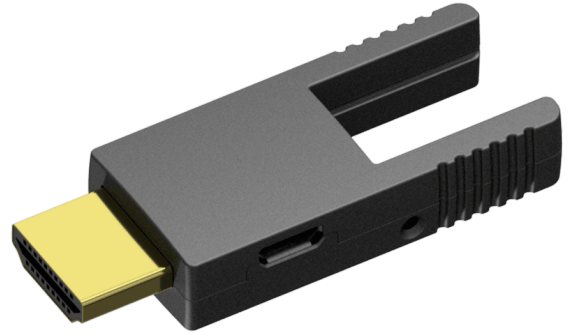
Highlights:

- Fiber optic technology
- Exchangeable connectors

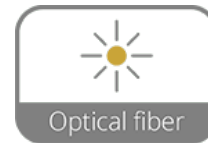
Product information:

The COP110 is an HDMI Micro D female to HDMI A male straight adapter replacement part* for use with the CLV215A, CLV220A & CLV315A only. This adapter can transform the connection of the HDMI Micro D cable to an HDMI A male connection for projectors, laptops, desktops or TV's where HDMI A ports are available.

*2 pieces COP110 come included with the CLV220A.



Properties:



Product Features:

Application	AV & IT
Series	Classic Series