

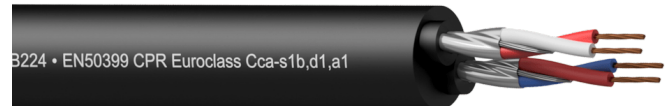
Highlights:

- EN50399 CPR Euroclass Cca-s1b,d1,a1
- 24 AWG (0.20 mm²) thin and dense stranded conductors
- Individual foil shielding with drain wire

Product information:

The CSB224-CCA is a high quality stereo balanced signal cable compliant to Cca standards of the Construction products regulations (CPR) regarding fire and flammability resistance in fixed installations, minimizing toxic smokes and providing optimal resistance to spreading fire.

In addition to its improved fire properties, the outer jacket of the cabling is smooth and durable for easy installation and pulling. The conductor section consists of two individually jacketed pairs which are surrounded by one outer jacket, allowing stereo balanced signal transfer over one single cable. Each individual pair consists of a 24 AWG stranded conductor with an aluminum foil shielding and drain wire. The highly effective shielding offers excellent immunity against noise and interference caused by external devices. The stranding keeps the cable flexible and easy to handle.



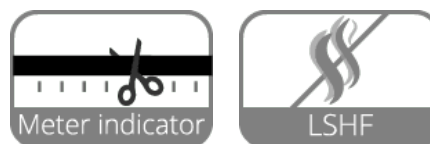
CSB224 • EN50399 CPR Euroclass Cca-s1b,d1,a1



Certification:



Properties:



Inner Conductors:



Shielding:



Product Features:

Application	AV & IT
Series	Contractor Series

Physical Characteristics:

EN50399 CPR Euroclass			Cca-s1b,d1,a1
Inner conductor	Insulation	Colours	Red / Blue White / Red
Outer jacket	Colours		Black
	Material		Polyolefin 11 mm (Ø)
Type of cable			24 AWG Microphone cable
Inner conductor	Material		BC 25 x 0.1 mm (Ø) (OFC)
	Section		0.20 mm ²
	American Wire Gauge		24 AWG
	Number of conductors		2
	Conductor twisting		Yes

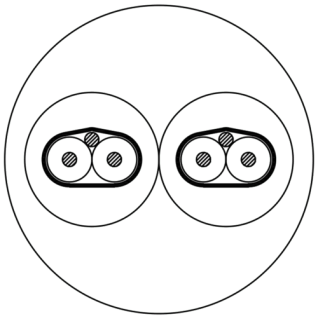
Standards & regulations:

RoHS2 compliant	According EU Directive 2011/65/EU
Reach compliant	According EC 1907/2006
CPR Euroclass	Cca-s1b,d1,a1
Flammability test	According EN 60332-1-2
Indoor / outdoor	UV resistant (UL1581, UVA, 720 h)
Smoke emissions	According IEC 61034
Zero halogen compounds	According EN 50267-2-1 IEC 60754

Mechanical Characteristics:

Temperature range	Mobile installation	- 5 °C till + 80 °C
	Fixed installation	- 15 °C till + 80 °C

Cross sections:



Electrical Characteristics:

Max. conductor	DC resistance	85 (Ω / Km)
Dielectric strength		500 (KV / 1 min. DC)
Rated voltage		100 V

Variants:

- CSB224-CCA/1 - 100 m wooden reel
- CSB224-CCA/3 - 300 m wooden reel